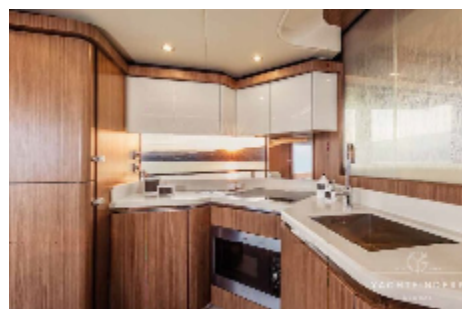


## Absolute Navetta 52 - Sold by YFG in Italy



Absolute Navetta 52 from 2016 is now available for sale! **THE MAGIC ITALIAN TOUCH** Today, we weigh anchor: the eye towards the horizon, the route taken to sail the majestic Sea, a greeting to the mainland and immediately a significant step in the limitless blue. On board, our whole world: the beloved crew, the free life on the water's surface, the destinations daydream during the winter. Absolute "Navetta 52" exhorts us to the sunny days, giving substance to our dream, surrounding our style with elegance and personality: an original and unique boat – but never bizarre, traditional and renowned – but never predicted. At the peak of the relaxation, anchored in a bay or crossing away, Nature surrounds us. Here, everything that you need is handy: "Navetta 52" hosts us, cuddles us, restores us, and entertains us without taking the place of the protagonist, the Sea, which the boat greatly respects, thanks to its quietness, its fuel efficiency and its low emissions. One more gaze from the main deck, all around us, the uninterrupted view on a charmed stage: the expansive windows are the border between the fancy comfort inside and the rough simplicity of the

vast Sea. Absolute's magic touch has carried us so far: "Navetta 52" will carry us beyond.

## General

---

Year:	2016
Price:	€1,745,098
Additional Charges:	None
Boat Type:	Power
Hull Type:	Planing Motoryacht
Location:	Europe
Engine/Fuel:	Diesel
Hull Material:	GRP

## Dimensions

---

Length:	52 ft
LOA:	15.90 m
LWL:	13.67 m
Beam:	4.65 m
Draft:	1.24 m
Displacement:	26.870 kg

## Engines

---

No. of Engines:	2
Engine Brand:	Volvo IPS650
Engine(s) HP:	353 hp

## Builder / Designer

---

Builder:	Absolute Yachts
Designer:	Absolute Yacht Design.

## Tankage

---

Fuel:	2000 Lt
Water:	600 Lt
Holding:	Yes

Accommodation

---



## Main Deck

---

- Straight Canaletto walnut with matt finishing furnishings
- Ivory-colour leather U-shaped sofa with straight Canaletto walnut table
- Two-seater leather sofa in ivory colour
- Electrical opening window
- Lava colour durmast oak floor
- Ceiling-mounted stainless steel handrail with ivory colour leather
- Side smoke-tinted windows
- Sliding door fabric curtain
- Venetian blinds for side windows with manual opening
- Three-leaves smoke-tinted glass access door to the hall with two sliding leaves
- Ivory colour leatherette coated ceilings with matt lacquered finishing
- Courtesy lights

## Lower Deck Access

- Stairs made of Lava colour durmast oak with stainless steel and dark brown leather handrail
- Companionway with Lava colour durmast oak floor
- Ivory colour leatherette coated walls
- Courtesy lights

## Full beam Master cabin

- Straight Canaletto walnut with matt finishing furnishings
- Longitudinal double bed with memory foam mattress and drawers
- Dark brown leather and straight Canaletto walnut with matt finishing headboard
- Ceiling reading lights
- Straight Canaletto walnut with matt finishing bedside tables with ivory coloured leatherette inserts
- Straight Canaletto walnut with matt finishing bed frame
- Straight Canaletto walnut with matt finishing cabinet with cross grains panel doors (four)
- Desk with vanity, mirror with lights and glossy lacquered furnishings
- Ivory colour leather sofa
- Walk-in wardrobe with lighting, drawers, shelves and door with a mirror inside
- Wide windows and opening portholes (two)
- Ivory colour leatherette coated walls



## Master cabin bathroom

- Straight Canaletto walnut with matt finishing corner cabinet, with drawers and shelves
- Corian with marble nuances countertop, white ceramic sink externally
- platinum chromed
- Wall cabinets with mirror
- Large shower with glass door, lacquered finishings in dark brown colour and HPL walls made of high-quality dark wood-finishing with grains in relief and hand spray with riser rail
- Opening portholes (two) with roller blind
- HPL floor in high-quality light wood-finishing with grains in relief
- Sliding access door
- Bow VIP cabin
- Straight Canaletto walnut with matt finishing furnishings
- Double bed with memory foam mattress and drawers
- Dark brown leather headboard
- Ceiling reading lights
- Straight Canaletto walnut with matt finishing bedside tables with ivory leatherette inserts
- Straight Canaletto walnut with matt finishing bed frame
- Straight Canaletto walnut with matt finishing wardrobe with cross-grain panels door and mirror inside
- Ivory colour leatherette coated walls
- Wide windows with opening portholes (two)
- Hatch with ladder for emergency exit, fly screen and roller blind
- Venetian blinds
- Courtesy lights
- Leatherette coated ceiling with ivory colour glossy lacquered finishings
- Rice-colour carpet floor

## Central bathroom

- Straight Canaletto walnut with matt finishing corner cabinet with drawers and shelves, Corian countertop with white ceramic sink, externally platinum chromed
- Wall cabinet with mirror
- Large shower with glass door, seat, lacquered finishings in dark brown colour and HPL walls made of high-quality dark wood finishing with grains in relief and hand spray with riser rail

## OnDeck

### Deck

- Stainless steel railing
- Stempost stainless steel protection cover
- Stainless steel deck apparel
- Stern bollards (two) with fairlead, mid-ship (two) and bow bollards (two) with protection plate
- Bollards (two) at the stern for crossing lines
- Raised gunwale
- Storage compartments inside walkways
- Storage compartment for boat hook
- Non-skid side walkways floors
- Covered side walkways with lighting
- Screens for windscreen and side windows
- White deck and deckhouse
- Windscreen wipers (two) with washer
- Ship-hull in white colour with smoke-tinted windows
- Fuel loading from both sides with protective teak cover and fuel sump pit

### Bow

- The area in the bow for mooring with non-skid floor
- Bow dinette with sun pad housing and glass holders
- Sofa with cream colour cushions in quick drainage foam
- Loudspeakers with fixed remote control and local volume adjustment for sound system connected with the radio in
- Flybridge Storage compartments for fenders
- Anchor winch with 21 kg (46 lbs) zinc-plated anchor and 75 mt (246 ft) chain
- Anchor windlass with chain counter Stainless steel anchor roller Self-draining anchor chain locker with a hatch for inspection

## Flybridge

---

- Aerodynamic windscreen with the upper outline made of stainless steel
- Sofas (two) in cream colour quick drainage foam on the sides of the piloting place with adjustable backrests for sunbathing function
- U-shaped sofa with cream colour cushions in quick drainage foam and teak table
- Wet bar with sink, fridge, Corian worktop and storage compartment
- Non-skid fl poor
- Storage compartment for a life raft
- Aft area that can be provided with loungers with adjustable backrests (extra)
- Storage compartment
- Loudspeakers
- Stairway with fibreglass structure, solid teak steps, stainless steel handrail and courtesy lights
- Flybridge access with hatchway railing
- Fly-bridge aft area railing

## Cockpit

---

- Sofa with cream colour cushions in quick drainage foam
- Loudspeakers with fixed remote control and local volume adjustment for sound system connected with the radio in Flybridge
- Compartments for mooring lines
- Storage compartment under the stairs
- Grey microfiber ceiling with LED lights
- Solid teak floor and steps
- Courtesy lights
- Stainless steel and plexiglass cockpit access gate
- Platform with boarding ladder
- Aft storage compartment
- Hot and cold water shower
- Direct water connection to shore
- Quay power socket and cable

### Fly-bridge Instrument Panel

- Ergonomic dashboard with anti-glare viewing angle 12" GPS display
- Volvo Package Software (cruise control, a trip computer, low speed, single lever)
- Manoeuvring Joystick
- Electronic and adjustable steering wheel
- Automatic pilot
- Alarms display
- VHF with DSC
- Trim tabs control with position indicator
- Anchor windlass remote control
- Compass
- Fusion Radio with iPod and iPhone slot, local volume control in the Flybridge, cockpit and bow area
- Sliding driving seat with flap and cover
- Dashboard cover
- Glass holders and glove compartments USB port



## Electrical System

---

- 3,5 kW (230V-50Hz) Generator with fume and water separators and Racor pre-filter with filter cartridge and water separator
- Inner and external LED lights
- Galvanic Isolators
- Engines room air intakes with air/water separating grills
- Portable fire extinguishers provided in different areas of the boat
- Fuel tanks with Crossover Connections (two) and double inlets
- Racor fuel pre-filters with a water presence sensor and acoustic signalling on the dashboard
- Electric bilge pump for fluid suction
- Use of fire-resistant materials for seawater plumbing
- Common drainage system

## Electronics

---

- Main and cold water distribution double system, with individualized slotted-offshaving inserts
- 20" IPS display
- Automatic engine room ventilation
- Battery charging system (crater control, a hydronic pump, speed, single lever)
- Blackwater tank by stick
- Electric and adjustable steering wheel
- Sacrificial anodes for saltwater
- Odors display sanitary pipes
- Fire with DSC and soundproofing
- Towing control with position indicator
- Deck and hull access inspection
- Composite structure
- Single sliding leather captain seat with thigh-rise flap
- Glass holder
- Footrests in lava colour durmast oak
- USB port

EXTRA EQUIPMENT

---



- Mediterranean Air Conditioning 48.000BTU 50 Hz with split units and dedicated shore socket and cable Fourth aft cabin air conditioning 50/60Hz with split unit Black anti-fouling Bow propeller Generator IS 16Kw (230V-50Hz) BBQ and sink in aft platform storage Inverter 1800W (230V - 50Hz) Lights all along the floor on the deck and flybridge Electro-hydraulic retractable gangway Hydraulic Platform - lifting capacity 450kg (990lbs) Manual right-side access door to piloting place in place of the electrical window Deck cleaning with fresh water and quay connection Dishwasher (50/60Hz) Fourth aft cabin equipped with flip-open bed, furniture in walnut wood, wardrobe, opening porthole, wide window, HPL floor, separate toilette with WC, sink, shower, independent access from the platform and open door alarm on the dashboard Washing machine-tumble dryer (230V-50Hz) Mooring winches Electrical sunshade in the flybridge (T-top required) Pearl grey-colour coverings for the sofa in the bow Privacy electrical sunshade in the cockpit Cockpit and side walkways anthracite grey-colour cover Pearl grey-colour coverings for the seat, wet bar, sofas and table on the flybridge Digital terrestrial TV antenna with TV connection cables, satellite wiring, and antenna HDMI connection cables Satellite dish diam. 45 cm (18") (second dome empty) installed on the flybridge external side if the T-top is not required Chain counter on the dashboard of the flybridge and hall GPS Chart plotter 12" screens (one Fly + two Salon) Second 7" Volvo display on the Fly Cameras in the engine room and the cockpit (Visible on displays in the Main deck Instrument Panel) TV LED 3D "A category" with WiFi connection, radio, integrated digital terrestrial and satellite HD decoder connected with Blu-Ray player - 3D (DVB-T 230V - 50Hz compatible) installed in a cabinet with TV lift mechanism in the Hall. T-top made of fibreglass on the flybridge with a coated ceiling in micro-fibre grey colour, lighting and stainless steel handrail. Bow sundeck with reclining backrests and pearl grey

## Options

---

- ~~Stainless steel 35kg (77 lbs) anchor~~
- ~~External covers~~
- ~~Black T-top made of fibreglass on the flybridge~~
- ~~Hydraulic retractable gangway~~
- ~~Hydraulic Platform - lifting capacity 450kg (990lbs)~~
- ~~Manual right-side access door to piloting place in place of the electrical window~~
- ~~Deck cleaning with fresh water and quay connection~~
- ~~Dishwasher (50/60Hz)~~
- ~~Fourth aft cabin equipped with flip-open bed, furniture in walnut wood, wardrobe, opening porthole, wide window, HPL floor, separate toilette with WC, sink, shower, independent access from the platform and open door alarm on the dashboard~~
- ~~Washing machine-tumble dryer (230V-50Hz)~~
- ~~Mooring winches~~
- ~~Electrical sunshade in the flybridge (T-top required)~~
- ~~Pearl grey-colour covers for the sofa in the bow~~
- ~~Privacy electrical sunshade in the cockpit~~
- ~~Cockpit and side walkways anthracite grey-colour cover~~
- ~~Pearl grey-colour coverings for the seat, wet bar, sofas and table on the flybridge~~
- ~~Digital terrestrial TV antenna with TV connection cables, satellite wiring, and antenna~~
- ~~HDMI connection cables~~
- ~~Satellite dish diam. 45 cm (18") (second dome empty)~~
- ~~installed on the flybridge external side if the T-top is not required~~
- ~~Chain counter on the dashboard of the flybridge and hall~~
- ~~GPS Chart plotter 12" screens (one Fly + two Salon)~~
- ~~Second 7" Volvo display on the Fly~~
- ~~Cameras in the engine room and the cockpit (Visible on displays in the Main deck Instrument Panel)~~
- ~~TV LED 3D "A category" with WiFi connection, radio, integrated digital terrestrial and satellite~~
- ~~HD decoder connected with Blu-Ray player - 3D (DVB-T 230V - 50Hz compatible)~~
- ~~installed in a cabinet with TV lift mechanism in the Hall~~
- ~~T-top made of fibreglass on the flybridge with a coated ceiling in micro-fibre grey colour, lighting and stainless steel handrail~~
- ~~Bow sundeck with reclining backrests and pearl grey~~





Additional Images



