



YACHTFINDERS
GLOBAL

RHEA Timonier 36 Version " GRAND LARGE" Dark Blue



With its elegant lines and classic sea excursion appearance, the Rhea 36 Timonier, offers all the necessary comforts for cruising. Modern in design, the Trawler 36 can ground safely thanks to the shape of its hull and the protected propeller and rudder. In addition, its carefully designed hull offers limited drag and a sharp clean entrance whilst the tunnel propellers optimise consumption

With the kitchen placed between the lounge and the cockpit, Rhea Timonier 36 provides important ease of use in interior design. Details such as the window that can be folded into the ceiling when the back door is open or the cockpit that becomes whole when the backdoor is opened towards the sea, the cookstove and lounge compact provide an extraordinary living space. With distinctive features in the inside fitting and design, Rhea Timonier 36 provides the highest level of comfort both in daily sailing and long-distance sailing.

GENERAL

Year:	2014
Price:	EUR€230000
Additional Charges:	Plus GST, Duty & Freight
Boat Type:	Power
Hull Type:	Semi Displacement
Location:	Offshore
Engine/Fuel:	Diesel
Hull Material:	GRP

DIMENSIONS

Length:	36 ft
LOA:	37'
Beam:	13'
Draft:	3'
Displacement:	19842 lbs

ENGINES

No. of Engines:	Two
Engine Brand:	Volvo Penta D4
Engine(s) HP:	225 hp
Cruising Speed:	11-18 Knots
Max Speed:	27 knots
Hours:	1100 hours

BUILDER / DESIGNER

Builder:	Rhea Marine
-----------------	-------------

TANKAGE

Fuel:	118 Gallons
Water:	110 Gallons
Holding:	44 Gallons

CONSTRUCTION

- Sandwich with isophthalic polyester resin
- Balsa/PVC core.
- Dark Blue Hull Color

HULL

- International anti-fouling paint
- Bow Truster Side Power 100 kg and remotes on navigation panels
- Two side doors on the hull.
- Two rudder protection monolithic keel – hull bottom
- Galvanized steel keel band for hull bottom & rudder protection
- Bathing ladder attached to the transom.

DECK & COCKPIT

- All external wood
- Sun cushions main deck
- Opening stern/beach platform and remote control system
- Starboard folding Teck seat, stainless steel support.

- Aft flexible shower with hot & cold water.
- Alleyway doors to protect the cockpit from wind and spray
- LED light on steps
- Two waterproof loudspeakers on the cockpit.

MACHINERY

ENGINES:

- Twin-engined diesel 2 x 225 hp Volvo
- (Around 800 hrs)

GENERATOR:

- Generator Whisper Power 8 Kva inside a cocoon 140 hours

ELECTRICAL EQUIPMENT

- Electrical panel 12V/220V
- Manual battery switches for service and engine
- 220V shore supply with 20m extension lead.
- 220V socket in the galley.

- Battery charger 50 Ah. Victron
- 12V sockets in flybridge and wheelhouse.
- 5 Gel Batteries (4 x 105 Ah for engines and service, 1 x 120 Ah for bow thruster and windlass)
- Electric Quick windlass 1000 W.
- Navigation and mooring lights in stainless steel.
- Automatic electric bilge pumps
- Electric water heater

Air Conditioning

- Air conditioning Webasto reversible system (Saloon 16000 +Cabins 12000 Btu)
- Webasto heater

ACCOMMODATION

WHEELHOUSE

- Wheelhouse floor: Wood parquet
- Copilot seat two persons to starboard. This seat in a high position, switch to the complementary seat of the
- The stainless steel steering wheel and wood varnish. Ø 50.
- Radio-CD / MP3 with an I-pod socket. (under the captain' s
- Fusion sound system 700 series, speakers
- Wheelhouse 24" flatscreen TV-DVD up and down system at chart table seat)
- Custom wooden made Chart table
- Sliding bench on wheelhouse (starboard)
- Steering console, space for navigation electronics and engine instruments.
- Flashlight on wheelhouse
- Aft searchlight under flybridge
- Displays fuel & water gauges, engine control levers, thruster's controls, steering compass.

OWNER'S CABIN

- Central bed (1.60x1.95m), and mattress.
- Curtains & mosquito nets Oceanair

BATHROOM (COMMON)

- Electric toilet fresh water

GUEST CABIN

- Superposed bed version
- Cabin floors: Wood parquet
- Cabin hull surfaces leathered.

GALLEY

- Open on saloon and access to the cockpit with a glazed panel controlled by two gas struts. Open position: cockpit ceiling.
- Resin worktop with stainless steel double sink, washing, and drainer.
- Gas Oven and stove Smeg
- Ice maker
- Extra deep freezer
- Idiomia water maker 130Lt/hour

COMMUNICATIONS, NAVIGATION & ENTERTAINMENT EQUIPMENT

Navigation Instruments

Wheelhouse

- Raymarine E127 12" MULTIFUNCTIONAL CHARTPLOTTER GPS REPEATER (FISHFINDER)
- Autopilot package P70R
- VHF Ray 55e Raymarine
- Preloaded navigation maps for Europe

ENGINE ROOM & SERVICES

- Stainless steel diesel oil tank (900 L), safety valves on the DO departures.
- Propeller 4 blades
- Stainless steel shaft.
- Two automatic bilge pumps.
- HDPE water tank 420 L.
- Hot water tank 40 L (engine exchanger and 220V)
- Holding tank with the gravity of 50 L, anti-odour filter
- Trim Tabs and controllers on the navigation panel

MOORING & ANCHORING

- Bow fitting with twin roller in stainless steel.
- Electric windlass, Quick 1000 W with foot control
- Anchor in stainless steel, Brand: ULTRA, 21 kg

-
- Générateur 7 Kva Whisper Power sous Cocon / Generator Whisper Power 7 Kva inside the cocoon
 - Climatisation réversible Climma – chauffage (Salon 16000 + cabines 12000 Btu) / Air conditionning Webasto reversible system
 - Batterie de service additional (105 Ah) / Additional service battery 105 Ah

Pack Electronique

- Navigation Package Wheelhouse
- Raymarine E127 12? MULTIFUNCTIONAL CHARTPLOTTER GPS REPEATER (FISHFINDER) –
- Autopilot package P70R
- RAY 55E VHF / VHF Ray 55e Raymarine

Securité

- Sec?rty equipement (+ 6 mile)
- Anchoring and mooring equipment
- (70 m chain Ø10) / Anchoring comfort package
- Mooring comfort package

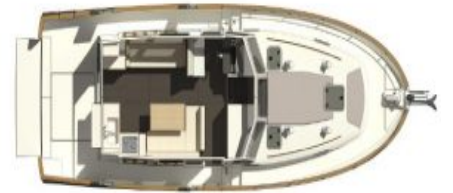
ADDITIONAL IMAGES



Exterior view (Left)



Interior view (Left)



Deck view (Left)



Deck view (Right)



Interior view (Right)



Interior view (Right)



Interior view (Bottom Left)



Interior view (Bottom Center)



Interior view (Bottom Right)

