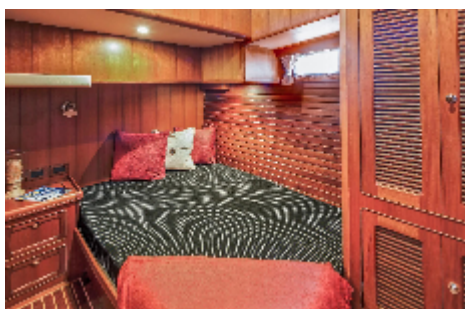


Selene 50 Voyager



Selene 50 Voyager - A Creative Three-Cabin Layout

The **Selene 50 Voyager Sedan** is a larger sibling of the **42 Voyager Sedan** model, with an immense superstructure and the same European flair. The yacht has a beautiful teak or optional cherry interior and a well-equipped sea-going U-shaped galley to port. Compared with the **Selene 42 Voyager Sedan**, it offers one more cabin and head, a more spacious saloon and more storage. For many people, the large flybridge with its optional hardtop will be the highlight of this yacht. The original design of the owner's cabin, which is located forward with a walk-around berth athwartship, leaves more space for nightstands and large wardrobe lockers. The **Selene 50 Voyager Sedan** epitomizes gracious styling and transports her passengers with the uppermost comfort and

performance...

General

Year:	2024
Price:	\$POA
Additional Charges:	Plus GST, Duty & Freight
Boat Type:	Power
Hull Type:	Trawler
Location:	Offshore
Engine/Fuel:	Diesel
Hull Material:	GRP

Dimensions

Length:	50 ft
LOA:	16.43m
Beam:	4.78m
Draft:	1.55m
Displacement:	65,055

Engines

No. of Engines:	1
Engine Brand:	Cummins QSL330
Engine(s) HP:	330
Cruising Speed:	9 knots
Max Speed:	11 knots

Builder / Designer

Builder:	Jet Tern Marine
Designer:	Howard Chen

Tankage

Fuel:	1200 gal.
Water:	300 gal.
Holding:	Yes

Saloon

- L-shaped sofa w/ 5" foam cushion
- Storage underneath the sofa
- Hi-lo fold-up dining table
- Entertainment centre w/TV/video cabinet
- Emergency hatch to the engine room
- Corian or Granite countertop
- Cantalupi dome lights
- Cabin reading light
- Diamond/Sea-Glaze Dutch door for saloon entrance
- Exposed roof beams w/ wood caps
- Teak overhead grab rail
- Bamboo blinds w/ drapes
- Self-lock window stopper

Pilothouse

- Helm station w/ integrated panels
- Oppen on Solenoid above steering station
- bycup hydraulic engine control system
- Fusion W/80 DGA & refrigerator (Sea Freezer optional) view
- Diamond/Sea-Glaze Dutch door for pilothouse (P/S)
- Sliding overhead built-in exhaust as an
- Sliding watch berth behind hi-seat
- Single lever break water type for pilothouse
- Fr/Bie S/S #316 double sink
- Diner & cabinet w/ shelves under
- Cantalupi step lights
- Diesel 30 w/ chart lights (1)
- Cabin lead bright propane stove w/
- Teak overhead grab rails

Master Cabin

- Queen-size berth w/ 5" foam mattress
- Side cabinets & drawer bureaus
- Wardrobe w/ automatic light & aromatic cedar liner
- TV cabinet w/ sliding door
- Teak or Cherry veneer countertop
- Cantalupi reading lights
- Cantalupi dome lights
- Mirror w/ teak frame
- Magazine rack
- Manship S/S #316 opening portlights

Vip Cabin

- Queen-size berth w/ 5" foam mattress
- Teak & S/S #316 built-in exhaust fan
- Hanging dome lights
- Teak or Cherry veneer countertop & bulkhead
- Cabin reading lights
- Cantalupi dome lights
- Vandyne telescoped pedestal in
- Manship S/S #316 opening door
- Manship S/S #316 opening portlights
- Single lever hot/cold water shower faucet
- Medicine cabinet
- Shower room w/ teak removable grating panel
- Granite floor w/ stainless steel divider (or teak & holly floor with teak border)
- S/S #316 tissue paper holder

Vip Head

- Tecma 12V DC freshwater toilet
- Shower room w/ teak removable grating panel
- Cantalupi dome lights
- Itai Aluminum sliding shower door
- Vanity unit w/ integral washbasin
- Single lever hot & cold shower faucet
- Granite floor w/ stainless steel divider (or teak & holly floor w/ teak border)
- Mirror w/ teak frame
- S/S #316 tissue paper holder

Machinery

STEERING SYSTEM

- Single Cummins QSL9
- Hydraulic @ 2100RPM (for Single system Deere #125AEM 3897P @ 1900RPM, M2)
- Handcrafted hydraulic engine control system and S/S #316 dia. 30" wheel on F/B
- Deluxe engine panel w/ complete
- Full protected FRP rudder
- Engine overheat & low oil pressure alarm
- Engine #630 propeller shaft (dia. 3"=76.2mm)
- PYI driplless shaft seal
- Faster NiAlBr 4-blade propeller
- Jabsco 12V DC dia. 4" engine room blowers
- FRP drip pan under engine
- Hydraulic FRP wet box muffler
- Full protected FRP rudder w/ S/S #316 rudder shaft
- S/S #316 pillars in the engine room
- Fluorescent light for E/R, commissary & lazarette
- Watertight door to the engine room

Electrical System

AC ELECTRICAL SYSTEM

- 120V AC or 240V AC system
- Northern Lights 12Kw. Generator w/ sound shield, muffler and remote start switch panel located in P/H, including dedicated 120 Amp/hr starting battery in FRP box with lid
- Delco 105 Amp engine alternator
- Heart Pathmaker emergency parallel switch
- Newmar 3-bank 120V / 240V AC battery charger system
- Newmar Integrated galvanic isolator
- Sea Freeze upright DC / AC refrigerator
- Combomatic washer/dryer w/ louvred door
- Grunert 120V/230V AC holding plate freezer
- Torrid 20 gallons 120V/240V AC dual heating source water heater
- Marinco 120V/240V 60hz 50Amp shore power inlets
- Marinco TV & Tel Inlet
- Hubbell AC outlets throughout the boat and GFCI in the head & flybridge
- AC/DC control panel w/ polarity indicator lights, appropriate switches, meters & breakers
- Copper bonding strap w/ ground cable attachment for each fitting

Fuel System

DC ELECTRICAL SYSTEM

- Total capacity 1,300 US gallons, two FRP fuel tanks with internal baffles, sumps, manual bilge pump, 2300 volt posts & plates
- Backflow preventer on deck filter & water separator for the main engine
- Racor 500MA fuel filter/lighter separator for generator (optional Kahlenberg)
- S/S Fuel Polishing system (optional item)
- Racor 500MA fuel filter/lighter separator
- Backflow preventer on fuel hose
- Backer 12V DC automatic fuel pressure regulator with gauge
- Fuel pump with gauge
- Racor 500MA fuel filter/lighter separator
- Fusion AC/DC receptacles for house service, engine & generator starting
- Cantalupi accommodation dome lights
- Cantalupi step lights for interior & exterior
- Cabin reading lights
- Stereo speakers in the stateroom

Mooring

- FRP bow pulpit with chain wash dam
- Maxwell 12V DC horizontal electric windlass
- Maxwell chain stopper
- Maxwell chain counter (optional item)
- S/S #316 self-launching anchor roller
- S/S #316 dia. 5" diameter Samson post
- S/S #316 hawsehole with cleats
- Seawater chain wash down (optional item)

Additional Images



