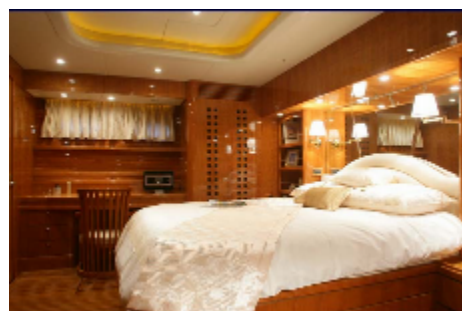
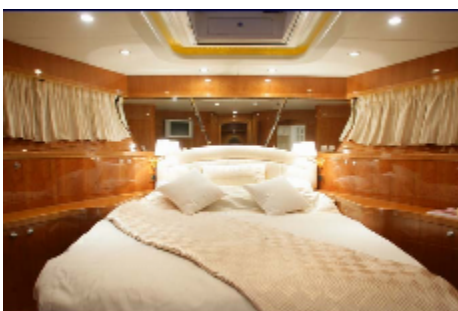


New Selene 62 Classic Explorer



New Selene 62 Classic Explorer

This is a unique opportunity! It doesn't happen often; Selene Yachts offers a brand new Selene 62 Classic Explorer stock boat for sale. The yacht is already 60% complete at our shipyard, and we don't need more than 6 months to deliver it! The Selene 62 Classic Explorer is one of Selene Yachts' best sellers. It brings together timeless elegance, quality, comfort, and long-range capability. The luxurious and practical layout consists of a galley up and three superb staterooms arranged with crew quarters aft, all with ensuite heads. The owner enjoys a full-beam master stateroom with a writing desk, vanity, and full-height wardrobes. The pilothouse provides great visibility, with two Diamond Sea Glaze Dutch doors and a dedicated stair up to the flybridge. The

functional and attractive galley can be up or down, with a dinette for six. The very spacious flybridge, with a U-shaped settee, table, sink, and room for a BBQ, makes a wonderful place to entertain. With a 2,200-gallon fuel capacity (9 842 litres), this CE Category A vessel is a full-displacement ocean yacht providing a maximum range of 3,000 nm. Selene 62 yachts can be seen worldwide, from the Pacific Northwest to the Mediterranean Sea, and it is one of the best passage makers on the market. The American and French magazines Southern Boating and Neptune have published several stories on this beautiful vessel! Contact us now for extra information!

General

Year:	2024
Price:	\$POA
Additional Charges:	Plus GST, Duty & Freight
Boat Type:	Power
Hull Type:	Trawler
Location:	Auckland
Engine/Fuel:	Diesel
Hull Material:	GRP

Dimensions

Length:	62 ft
LOA:	20.98m
Beam:	5.69m
Draft:	1.96m
Displacement:	143,000 lbs

Engines

No. of Engines:	1
Engine Brand:	John Deere
Engine(s) HP:	525
Cruising Speed:	10 Knots
Max Speed:	11 Knots

Builder / Designer

Builder:	Jet Tern Marine
Designer:	Howard Chen

Tankage

Fuel:	9845 Litres
Water:	2005 Litres
Holding:	Yes

- Cook gelcoat for hull, deck, superstructure & non-skid
- Vinylester resin for the first 5 layers lamination
- Cymax bi-axis uni-direction stitched roving / mat
- Taiwan Glass mat
- Divinycell core sandwich structure for hull side shell, bottom, deck & superstructure
- Longitudinal stringers & transverse frames system
- 5 watertight bulkheads (chain locker, Fwd. E/R, Aft. E/R, lazarette)
- Collision locker
- Hull and deck joint sealed by glue, bolted & laminated with mat and woven roving
- Integral swim platform with extended hull underneath
- Recessed bow thruster tunnel
- Integral FRP stern thruster casing
- Integral full protected keel & rudder shoe

- Manship S/S #316 opening portlights
- Manship S/S #316 hatches for pilothouse & fwd. stateroom
- Oceanair hatch shade w/ insert screens
- Diamond/Sea-Glaze Dutch doors for pilothouse P&S, salon & E/R entrance
- Taco S/S #316 1-1/2" solid upper & lower dual fender rails
- S/S #316 oval shaped hand rail for fore deck & dinghy deck
- S/S #316 telescope swim ladder
- Aluminum alloy window frames w/ power coated
- Teak cap rail for Portuguese bridge, side deck & aft. deck
- S/S #316 bow & stern flag pole socket
- Teak burgee & flag staffs
- Freeing port for fore, side & aft. deck
- Molded inlay pattern non-skid to fore, side, aft, F/B decks & swim platform
- Portuguese bridge access gate to fore deck
- After deck side gates, swing in
- Transom gates, swing out
- Portuguese side gates, swing out, P&S
- Storage lockers w/ teak grating inside Portuguese bridge
- S/S #316 self-lock type exterior gate handle
- Cantalupi exterior dome lights
- Cantalupi exterior courtesy lights

Flybridge

- Helm station in center w/ console box
- S/S #316 dia. 32" destroyer type steering wheel
- S/S #316 grab rail
- S/S #316 sliding door from F/B to pilothouse
- FRP BBQ box
- Polar wash basin
- Todd helm seat (2)
- AFI 24V DC outlet
- Chart counter top
- Tinted plexiglass windscreen with S/S #316 bracket
- Dinghy space on the fly bridge deck
- FRP U-shaped settee w/ storage underneath

Cockpit

- FRP settee w/ Sunbrella cushion
- Teak table w/ S/S #316 table pedestal
- Fresh water deck wash
- Flojet saltwater wash down pump
- Dedicated spiral stair to F/B
- Steps to swim platform
- Foldable cleats at swim platform (Option)
- Scandvik transom shower
- FRP bureau (can be acted as the 3rd station) (Option)

5

- Light teak or cherry veneer (straight grain or mountain grain)
- Schwepper door locks & handles for interior doors
- Lamp push button for all locker doors & drawers
- Cantalupi lights system
- Vimar switch
- Cabin reading lights
- Solid teak & holly sole w/ teak border
- Fiberglass "H" shaped floor beam
- Vinyl & EVA foam panels for ceiling lining
- Drapery for saloon and each staterooms
- Selected sliding windows w/ tinted tempered glass
- 2" latex foam laminates w/ PU foam for all cushion of sofa & berth

Saloon

- U-shaped sofa w/ 5" foam cushion
- Storage underneath the sofa
- Table & corner tables
- Entertainment center w/ TV / video cabinet
- Cantalupi wall light
- Cabin reading light
- Diamond/Sea-Glaze Dutch door for salon entrance
- Emergency hatch to engine room
- Corian or Granite bar counter top
- Teak or cherry swivel chairs w/ 2" foam cushion
- Bamboo blinds w/ drapes
- Self-lock window stopper

- Counter top w/ Integral bar
- Corian or Granite counter top & back splash
- Sea Freeze JT26 refrigerator
- Jabsco 24V DC dia. 3" electric exhaust fan above stove
- Force 10 3-burner propane stove w/ oven & alarm monitor panel set
- GE microwave w/ built-in exhaust
- Single lever swivel type faucet
- Franke S/S #316 double sink
- Overhead cabinets
- Drawers & storage lockers w/ shelves under counter
- Trash bin w/ lid

- Helm station w/ instrument panels
- Upper console box above steering station
- Electric engine control
- Diamond/Sea-Glaze Dutch doors for P&S side
- Sliding watch berth behind raised seat
- Chart table w/ drawer
- S/S #316 or teak stair from pilot house to F/B
- Raised seat w/ foot rest
- Manship S/S #316 hatch
- Oceanair hatch shade w/ insect screen
- Teak overhead grab rail
- Cantalupi red lights (2)
- Cantalupi step lights
- Cantalupi dome lights
- Daniel Smith chart lights
- Cabin reading lights

- Queen-size berth w/ 6" foam mattress
- Side cabinets & drawer bureaus
- Safe located at master stateroom or office
- Wardrobe w/ automatic light & aromatic cedar liner
- TV / video cabinet
- Teak, Cherry or Granite veneer counter top
- Cantalupi reading lights
- Cantalupi dome lights
- Manship S/S #316 opening portlights
- Windline telescope escape ladder
- Dedicated teak stairway to saloon

- Tecma 24V DC freshwater toilet
- Jabsco 24V DC dia. 3" exhaust fan
- Cantalupi dome lights
- Formica finish head lining & FRP bulkhead
- Corian or Granite counter top & back splash
- Vanity unit w/ integrated wash basin
- Tempered clear glass sliding shower door
- Manship S/S #316 opening portlights
- Single lever hot / cold water shower faucet
- Medicine cabinet w/ mirror door
- Vanity mirror w/ teak frame
- Granite floor w/ stainless steel divider (or teak & holly floor with teak boarder)
- Teak removable grating for shower room

- Queen-size berth w/ 5" foam mattress
- Side cabinets & drawer bureaus
- Wardrobe w/ automatic light & aromatic cedar for the liner
- TV cabinet
- Teak or Cherry veneer counter top
- Cabin reading lights
- Cantalupi dome lights
- Windline telescope escape ladder
- Manship S/S #316 hatch
- Manship S/S #316 opening portlights with storm cover

- Tecma 24V DC freshwater toilet
- Jabsco 24V DC dia. 3" exhaust fan
- Formica finish ceiling lining & FRP bulkhead
- Corian or Granite counter top & back splash
- Cantalupi dome lights
- Tempered clear glass sliding shower door
- Manship S/S #316 opening portlights
- Teak removable grating panel for shower room
- Vanity unit w/ mirror
- Itai Aluminum sliding shower door
- Teak removable grating panel for shower room
- Single lever hot / cold water shower faucet
- Medicine cabinet w/ mirror door
- Granite floor w/ stainless steel divider (or teak & holly floor w/ teak border)

- Teak battens on side ceiling
- Twin berth w/ drawer underneath
- Book shelves
- 5" foam mattress for each berth
- Hanging locker w/ automatic light
- Overhead cabinet at port side
- Cabin reading lights
- Vanity bureau
- Vanity mirror w/ teak frame
- Manship S/S #316 opening portlights

- Tecma 24V DC freshwater toilet
- Jabsco 24V DC 3" exhaust fan
- Formica finish ceiling lining & FRP bulkhead
- Corian or Granite counter top & back splash
- Cantalupi dome lights
- Tempered clear glass sliding shower door
- Manship S/S #316 opening portlights
- Teak removable grating for shower room
- Vanity unit w/ integral wash basin
- Medicine cabinet w/ mirror door
- Single lever hot / cold water shower faucet
- Granite floor w/ stainless steel divider (or teak & holly floor w/ teak border)

- Dedicated access from side deck to crew quarters
- Bunk w/ 4" foam mattress & drawer underneath
- Hanging locker w/ automatic light & aromatic cedar liner
- Cantalupi dome lights
- Cabin reading lights
- Book shelf
- Overhead locker
- Laundry lockers w/ louvered door

- Tecma 24V DC freshwater toilet
- Jabsco 24V DC dia. 3" exhaust fan
- Formica finished ceiling lining & FRP bulkhead
- Corian or Granite counter top & back splash
- Cantalupi dome lights
- Vanity unit w/ integral wash basin
- Single lever hot / cold water shower faucet
- Teak removable grating panel for shower room

- Single John Deere 6125AFM 526HP@2100RPM,M4
- Electric engine control system at each helm station
- Deluxe engine panel w/ complete instrumentation & alarms
- Engine overheat & low oil pressure alarm
- Aqua #22 propeller shaft (dia. 3"=76.2mm)
- PYI dripless shaft seal
- Faster NiAlBr 4 blade propeller
- Reverso gear driven oil change pump
- FRP drip pan under engine
- Hydraulift FRP wet box muffler
- Engine room blowers dia. 5" 120/230V AC (4 units)
- Full protected FRP rudder w/ S/S #316 dia. 2-1/2" shaft
- S/S #316 pillars in engine room
- Fluorescent light for E/R, commissary & lazarette
- Watertight door to engine room

- Hynautic hydraulic steering system for two stations
- Handcrafted teak wheel in pilot house and S/S #316 wheel on F/B
- Emergency tiller
- Full protected FRP rudder

- 120V AC or 240V AC system
- One Northern Lights 20Kw. generator w/ sound shield, muffler and remote start switch panel located in P/H, includes dedicated 120 Amp / hr starting battery
- 80 Amp engine alternator
- Heart Pathmaker emergency parallel switch
- Marinco shore power inlets
- Marinco TV & Tel inlet
- Hubbell AC outlets throughout the boat
- Newmar integrated galvanic isolator
- Asko separated washer / dryer
- Torrid S/S 30 gallons 120V/ 240V AC dual heating source water heater
- AC/DC control panel w/ polarity indicator light, appropriate switches, meters & breakers
- Hubbell GFCI outlet in head & flybridge
- Copper bonding strap w/ ground cable attachment for each fitting
- 3-bank 120V/240V AC battery charger system
- Mastervolt or equivalent 3-bank 120V or 240V AC battery charger unit
- Spare circuit breaker for optional Auto pilot system

- 24V DC system
- Maxwell HWVC 3500 windlass w/ up/down switches at foredeck & each helm stations
- Aqua Signal navigation lights
- Kahlenberg air horn
- Exalto electric wipers for 3 front windshields w/ fresh water wiper wash
- Groco automatic water pressure system
- Rule sump pumps w/ ultra float switches
- Vision AGM deep cycle batteries for house service, engine & generator starting
- Cantalupi accommodation dome lights
- Cantalupi step lights for interior & exterior
- Stereo speakers in stateroom

Fuel System

- Two FPR fuel tanks w/ internal baffles, sumps, balancing lines, inspection plates, total capacity 2,200 US gallons
- Racor 75/1000 Max dual fuel filter / water separator for main engine
- Racor 900MA fuel filter / water separator for generator
- ESI fuel polishing system
- Racor USCG & CE certified fuel line hose
- Parker ball valve for fuel system
- Electric fuel gauge
- Magnetic fuel sight gauge for each fuel tank
- Fuel management system

23

- FRP bow pulpit with chain wash dam
- Maxwell HWVC 3500 24V DC electric horizontal windlass with capstan
- Maxwell chain stopper
- Maxwell chain meter
- S/S #316 self-launching anchor roller
- S/S #316 5" diameter Samson post
- S/S #316 hawse hole with cleat (8 units)
- Fresh water chain wash down
- Pilot house & fore deck windlass control switch

Plumbing System

- Plastic water piping system
- Electric water gauge
- Two FRP water tanks w/ shut off valve, total capacity 530 gallons
- One FRP 170 gallons holding tank w/ Y-valve & Jabsco macerator pump, deck discharge outlet & remote full display panel in master head
- Sea cocks on all through hull fittings with double hose clamps
- Bronze basket type internal sea water strainer for main engine
- Rule electric bilge pumps w/ automatic float switch
- Whale manual bilge pump
- Status panel w/ warning signal in helm station to warn of bilge pump operation

24

- Soundown E/R sound insulation system including damping tile, 3" sound insulation foam & Aluminum perforated plate
- International anti-fouling bottom paint
- Soundown Sylomer strip floating floor
- International Gelshield primer coating
- International boot top line
- Epifanes interior varnish
- Optional Awlgrip hull PU paint
- Optional Mastervolt transformer
- Optional Sidepower 25hp hydraulic bow & stern thruster
- Optional Maxwell electrical capstan at cockpit
- Optional Stidd helm seat 500 series
- Optional Nutone central vacuum system
- Optional Maxwell electrical capstan
- Optional Stidd helm seat 500 series
- Optional Raritan icemaker
- Optional Nutone central vacuum system
- Optional Broadwater 4-burner propane stove
- Engine room FRP flooring

Additional Images

